

# Communicating With Your Legislator



92nd Arkansas  
General Assembly



# Arkansas Municipal League

---

## Physical Address

301 W. Second St.  
North Little Rock, AR 72114  
501-374-3484

## Mailing Address

P.O. Box 38  
North Little Rock, AR 72115

## Important Online Resources

The Arkansas Municipal League website at [www.arml.org](http://www.arml.org) is the online home for information about the League and its many programs and services. To stay informed on legislative priorities and developments during the 92nd General Assembly of the Arkansas Legislature, click on the Legislative Action Center. Here you will find the online version of the *Legislative Bulletin*, contact information for all Arkansas legislators, and the League's *Policies and Goals*. You can also search for bills by number, sponsor, and keyword.

The League is expanding its outreach efforts in 2019 with the launch of a new legislative directory app, ARML Leg, for your smartphone. Also, visit the “eCommunications” section on the front page of [www.arml.org](http://www.arml.org) to sign up for the text messaging service and ListServ. Currently, the League offers five ListServes in order to exchange information.

The Arkansas General Assembly's website is [www.arkleg.state.ar.us](http://www.arkleg.state.ar.us). At this site, you have the ability to track legislation from the first introduction of a bill in committee to its passage into law. You can download bills, research the current status of a bill, and discover other useful Legislature-related information.

# Table of Contents

---

<b>Introduction</b> . . . . .	<b>4</b>
<b>Key Municipal Principles</b> . . . . .	<b>5</b>
<b>Arkansas General Assembly 101</b> . . . . .	<b>6</b>
<b>How a Bill Becomes an Arkansas Law</b> . . . . .	<b>7</b>
<b>Effective Ways to Influence Your Legislator</b> . . . . .	<b>7</b>
<b>Graph—How a Bill Becomes a Law</b> . . . . .	<b>8</b>
<b>State Senate Districts Map</b> . . . . .	<b>9</b>
<b>State Senate Districts and Municipalities</b> . . . . .	<b>10</b>
<b>Senate Standing Committees—Class “A”</b> . . . . .	<b>13</b>
Public Health, Welfare and Labor . . . . .	13
Revenue and Taxation . . . . .	13
Education . . . . .	13
Judiciary . . . . .	13
Agriculture, Forestry and Economic Development . . . . .	14
Insurance and Commerce . . . . .	14
City, County and Local Affairs . . . . .	14
State Agencies and Governmental Affairs . . . . .	14
Transportation, Technology and Legislative Affairs . . . . .	15
<b>State House Districts Map</b> . . . . .	<b>16</b>
<b>State House Districts Detail Maps</b> . . . . .	<b>17</b>
Close up views of the northwest, Fort Smith and central State House Districts . . . . .	17
<b>House Districts and Municipalities</b> . . . . .	<b>18</b>
<b>House Standing Committees Class “A”</b> . . . . .	<b>23</b>
Education . . . . .	23
Judiciary . . . . .	23
Public Health, Welfare and Labor . . . . .	23
Public Transportation . . . . .	23
Revenue and Taxation . . . . .	23
<b>House Standing Committees Class “B”</b> . . . . .	<b>23</b>
Aging, Children and Youth, Legislative and Military Affairs . . . . .	23
Agriculture, Forestry and Economic Development . . . . .	23
City, County and Local Affairs . . . . .	23
Insurance and Commerce . . . . .	23
State Agencies and Governmental Affairs . . . . .	23

# Introduction

---

The Arkansas General Assembly is composed of 135 members: 100 House members and 35 Senate members. Over 2,000 bills have been filed during a General Session, and the Legislature in years past has passed more than half of the bills introduced into law.

The lobbying process is often chaotic with numerous viewpoints competing for the lawmakers' attention. During the session, the Arkansas Municipal League staff will be working on behalf of the cities and towns of Arkansas to promote and protect the interests of Arkansas municipalities.

Influencing lawmakers should be considered a team effort of local municipal officials and the League staff. Working together, we can make each session a success for Arkansas municipalities.

# Key Municipal Principles

---

- **The concept of Home Rule**

The Arkansas Municipal League strongly believes in the philosophy of local control that allows municipal governments maximum flexibility and discretion in governing themselves. Local control should remain. We urge the state Legislature to resist imposing additional, mandated responsibilities upon local governments without providing the financial resources to fund such mandates. Preemption of local control should also be avoided.

- **Protection of local sales tax**

The League strongly believes that the state should protect the authority of cities and towns to levy local sales taxes. Local sales taxes are used for municipal operations and numerous local capital improvement projects, including public safety, public works, and recreation facilities. The League policy is that the state should avoid raising the state sales tax and granting sales tax exemptions. The state should concentrate on broadening the sales tax base and having as low a sales tax rate as possible.

The League also maintains that the state should see that state turnback to municipalities is maintained at a level commensurate with the responsibilities of municipal government.

- **Water District funding**

State water loans and grants should be used efficiently. Funding rural water districts at exorbitant costs per user is not wise usage of public funds and unnecessarily leads to urbanization of our state's natural areas, which more properly should be utilized for agriculture, hunting, fishing, and other outdoor activities our beautiful state makes possible.

- **Highways and Street Programs**

The League holds that any new highway program should consider all segments of our statewide transportation network, including state highways, county roads, and city streets. Therefore, any new highway program that generates revenue should include the traditional 70-15-15 (70 percent to the state, 15 percent to the cities, 15 percent to the counties) formula that has been successful in the past. A state aid street program is now in effect by virtue of Amendment 91, passed in 2012 and should be supported and maintained as approved by the electorate.

# Arkansas General Assembly 101

---

- The Arkansas Constitution calls for the General Assembly to meet on the second Monday of January (Jan. 14, 2019) of each odd-numbered year. Arkansas voters in 2008 passed Amendment 86, which requires the Legislature to meet in even-numbered years beginning in 2010 for a 30-day fiscal session.
- There are 135 members of the General Assembly. The Senate has 35 members; the House of Representatives has 100. The Lieutenant Governor presides as President Pro Tempore of the Senate; and the Speaker, who is elected by House members, presides in the House.
- Senate members may hold office for a total of 16 years of any combination in either chamber.
- House members may hold office for a total of 16 years of any combination in either chamber.
- The process of making a bill become law begins in the committees.
- There are 10 standing Senate committees that report back to the Senate with recommendations after committee hearings. Each Senator serves on two of the standing committees. Each standing committee has eight members.
- There are 10 standing House committees. Each Representative serves on two standing committees. Each House committee has 20 members.
- Each committee (both House and Senate) has a chair and vice chair who are appointed to these positions by the Speaker of the House and the President Pro Tempore, respectively.
- Standing committees consist of legislators who are appointed to study and hear legislative proposals according to subject matter. Examples of standing committees are City, County and Local Affairs Committee and Revenue and Tax Committee.
- Several “select” committees in both the House and Senate address in-house concerns, and there are several “joint” committees made up of representatives from both the House and Senate.
- Committee meetings are open to the public, and the public is often asked to testify.
- During the legislative session, committees usually meet in the morning to hear bills.

## How a Bill Becomes an Arkansas Law

---

A bill is simply an idea that someone would like to become law. The idea can come from anyone, but only a representative or senator can take that idea and guide it through the General Assembly. Once a bill is introduced by a legislator, it is referred to a committee. The full committee holds hearings on the bill and may consider it in its original form or amend it prior to voting on the bill. All bills must obtain a majority vote of the committee members in order to be recommended for passage. It is in the committee where the bill is usually amended, tabled, or killed.

If the bill receives a “do pass” recommendation by the majority of the committee, then it is ready for the House or Senate floor where it may be debated. If the bill passes, it is then sent to the other chamber where the same process is repeated. It should be understood that the bulk of legislative work is done by standing committees and not, as commonly believed, by debate during floor sessions.

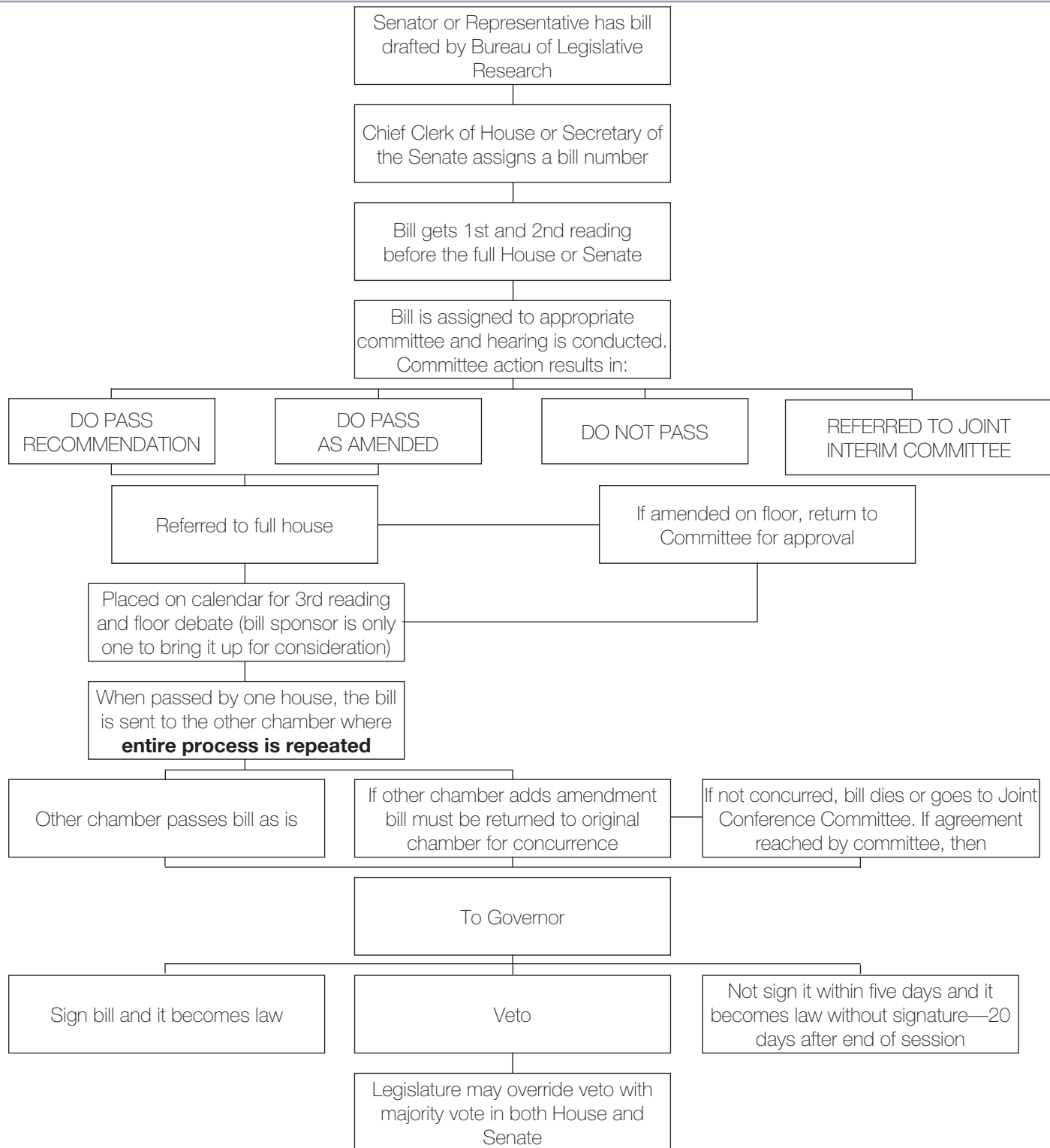
Once both the House and Senate agree on the exact language of the bill, it is sent to the Governor for his signature. If the Governor signs the bill it becomes law, usually upon the Governor’s signing if it is an emergency. Should the Governor veto the bill, the Legislature has the option of trying to override the veto with a simple majority vote.

## Effective Ways to Influence Your Legislator

---

- Make it your business to become acquainted with your Senator and Representative before the session begins.
- Inform your legislators of the key principles of League policies and statewide issues of municipal concern.
- Participate in the legislative process by staying informed through the League’s Legislative Action Center at [www.arml.org](http://www.arml.org), and download the new legislative directory app, ARML Leg, for your smartphone.
- Sign up for legislative alerts via the League’s text messaging service and take action if necessary.
- Be prepared to call, write, fax, email, or text your legislators about issues that will affect your municipality.
- Hold legislators accountable for their positions.
- Thank your legislators when they support your position.

# Graph—How a Bill Becomes a Law

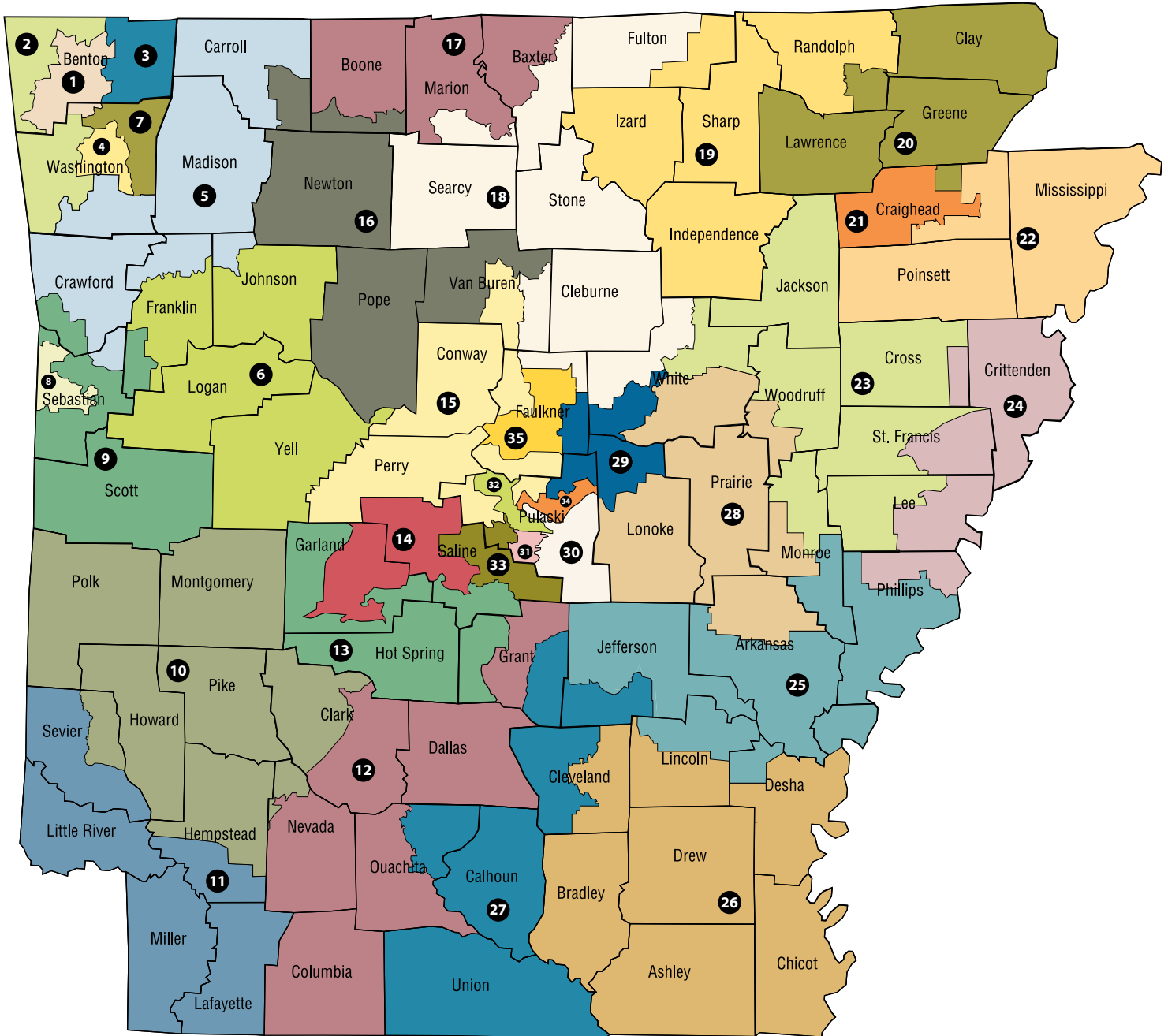




# State Senate Districts Map

State Senate Districts are identified by color-code and number.

The official maps are available from the Arkansas Secretary of State's office or online at [www.sos.arkansas.gov](http://www.sos.arkansas.gov).



# State Senate Districts and Municipalities

---

## **District 1—Bart Hester**

Bella Vista, Bentonville, Cave Springs, Centerton, Elm Springs, Gentry, Gravette, Highfill, Little Flock, Lowell, Pea Ridge, Rogers, Siloam Springs, Springdale, Springtown, Tontitown

## **District 2—Jim Hendren**

Bella Vista, Bentonville, Decatur, Farmington, Fayetteville, Gentry, Gravette, Lincoln, Morrow, Pea Ridge, Prairie Grove, Salem Springs, Siloam Springs, Sulphur Springs, Tontitown

## **District 3—Cecile Bledsoe**

Avoca, Bella Vista, Bentonville, Bethel Heights, Garfield, Gateway, Little Flock, Lowell, Pea Ridge, Rogers, Springdale

## **District 4—Greg Leding**

Farmington, Fayetteville, Greenland, Johnson, Prairie Grove, Springdale, Sulphur Springs, West Fork

## **District 5—Bob Ballinger**

Alma, Alpena, Beaver, Berryville, Blue Eye, Cedarville, Central City, Charleston, Chester, Dyer, Eureka Springs, Green Forest, Hindsville, Huntsville, Kibler, Lavaca, Mountainburg, Mulberry, Oak Grove, Rudy, Saint Paul, Van Buren, West Fork, Winslow

## **District 6—Gary Stubblefield**

Altus, Belleville, Blue Mountain, Booneville, Branch, Caulksville, Clarksville, Coal Hill, Danville, Dardanelle, Denning, Hartman, Havana, Knoxville, Lamar, Magazine, Morrison Bluff, Mulberry, Ola, Ozark, Paris, Plainview, Ratcliff, Scranton, Subiaco, Wiederkehr Village

## **District 7—Lance Eads**

Bethel Heights, Elkins, Elm Springs, Fayetteville, Goshen, Johnson, Springdale, Sulphur Springs, Tontitown

## **District 8—Mathew Pitsch**

Barling, Bonanza, Fort Smith, Greenwood, Hackett

## **District 9—Terry Rice**

Barling, Branch, Cedarville, Central City, Charleston, Fort Smith, Greenwood, Hartford, Huntington, Kibler, Lavaca, Mansfield, Midland, Van Buren, Waldron

## **District 10—Larry Teague**

Amity, Antoine, Arkadelphia, Black Springs, Blevins, Caddo Valley, Cove, Daisy, Delight, Dierks, Emmet, Glenwood, Grannis, Hatfield, Hope, Lockesburg, McCaskill, Mena, Mineral Springs, Mount Ida, Murfreesboro, Nashville, Norman, Oakhaven, Oden, Okolona, Ozan, Perrytown, Prescott, Tollette, Vandervoort, Washington, Wickes

## **District 11—Jimmy Hickey, Jr.**

Ashdown, Ben Lomond, Bradley, Buckner, De Queen, Foreman, Fouke, Fulton, Garland, Gillham, Horatio, Lewisville, McNab, Ogden, Patmos, Stamps, Texarkana, Wilton, Winthrop

## **District 12—Bruce Maloch**

Arkadelphia, Bluff City, Bodcaw, Caddo Valley, Cale, Camden, Carthage, Chidester, Emerson, Emmet, Fordyce, Gum Springs, Gurdon, Louann, Magnolia, McNeil, Prattsville, Prescott, Rosston, Sheridan, Smackover, Sparkman, Stephens, Taylor, Waldo, Whelen Springs, Willisville

## **District 13—Alan Clark**

Bauxite, Benton, Bryant, Donaldson, Friendship, Haskell, Hot Springs, Leola, Lonsdale, Malvern, Midway, Perla, Poyen, Prattsville, Rockport, Traskwood, Tull

## **District 14—Bill Sample**

Benton, Fountain Lake, Hot Springs, Mountain Pine

# State Senate Districts and Municipalities

---

## **District 15—Mark Johnson**

Adona, Bigelow, Casa, Clinton, Conway, Damascus, Fourche, Greenbrier, Houston, Little Rock, Maumelle, Mayflower, Menifee, Morrilton, Oppelo, Perry, Perryville, Plumerville, Twin Groves, Wooster

## **District 16—Breanne Davis**

Alpena, Atkins, Dover, Everton, Fairfield Bay, Green Forest, Hector, Jasper, London, Pottsville, Russellville, Shirley, Valley Springs, Western Grove

## **District 17—Scott Flippo**

Alpena, Bellefonte, Bergman, Bull Shoals, Cotter, Diamond City, Flippin, Gassville, Harrison, Lakeview, Lead Hill, Mountain Home, Omaha, Pyatt, South Lead Hill, Summit, Yellville, Zinc

## **District 18—Missy Irvin**

Big Flat, Briarcliff, Calico Rock, Concord, Damascus, Fairfield Bay, Fifty-Six, Gilbert, Greers Ferry, Guy, Heber Springs, Higden, Leslie, Letona, Marshall, Mount Vernon, Mountain View, Norfolk, Oxford, Pangburn, Pindall, Quitman, Rose Bud, Saint Joe, Salem, Salesville, Twin Groves, Viola, Western Grove

## **District 19—James Sturch**

Ash Flat, Batesville, Biggers, Calico Rock, Cave City, Cherokee Village, Cushman, Evening Shade, Franklin, Guion, Hardy, Highland, Horseshoe Bend, Magness, Mammoth Spring, Maynard, Melbourne, Moorefield, Mount Pleasant, Newark, Oil Trough, Oxford, Pineville, Pleasant Plains, Pocahontas, Ravenden, Ravenden Springs, Reyno, Sidney, Southside, Sulphur Rock, Williford

## **District 20—Blake Johnson**

Alicia, Black Rock, Brookland, College City, Corning, Datto, Delaplaine, Greenway, Hoxie, Imboden, Knobel, Lafe, Lynn, Marmaduke, McDougal, Minturn, Nimmons, Oak Grove Heights, O’Kean, Paragould, Peach Orchard, Piggott, Pocahontas, Pollard, Portia, Powhatan, Ravenden, Rector, Reyno, Saint Francis, Sedgwick, Smithville, Strawberry, Success, Walnut Ridge

## **District 21—John Cooper**

Bay, Bono, Cash, Egypt, Jonesboro, Lake City, Sedgwick

## **District 22—Dave Wallace**

Bassett, Bay, Birdsong, Black Oak, Blytheville, Burdette, Caraway, Dell, Dyess, Etowah, Fisher, Gosnell, Harrisburg, Joiner, Jonesboro, Keiser, Lake City, Leachville, Lepanto, Luxora, Manila, Marie, Marked Tree, Monette, Osceola, Trumann, Tyrnza, Victoria, Waldenburg, Weiner, Wilson

## **District 23—Ronald Caldwell**

Alicia, Amagon, Aubrey, Augusta, Bald Knob, Beedeville, Bradford, Brinkley, Caldwell, Campbell Station, Cherry Valley, Colt, Diaz, Fargo, Forrest City, Grubbs, Haynes, Hickory Ridge, Hunter, Jacksonport, Judsonia, McCrory, Moro, Newport, Palestine, Patterson, Rondo, Russell, Searcy, Swifton, Tuckerman, Tupelo, Weldon, Wheatley, Widener, Wynne

## **District 24—Keith Ingram**

Anthonyville, Clarkedale, Crawfordville, Earle, Edmondson, Forrest City, Gilmore, Helena-West Helena, Horseshoe Lake, Hughes, Jennette, Jericho, La Grange, Lexa, Madison, Marianna, Marion, Marvell, Parkin, Rondo, Sunset, Turrell, West Memphis, Widener

# State Senate Districts and Municipalities

---

## **District 25—Stephanie Flowers**

Alzheimer, Dumas, Elaine, Gillett, Gould, Grady, Helena-West Helena, Humphrey, Lake View, Mitchellville, Pine Bluff, Redfield, Saint Charles, Sherrill, Wabbaseka, White Hall

## **District 26—Eddie Cheatham**

Arkansas City, Banks, Crossett, Dermott, Dumas, Eudora, Fountain Hill, Hamburg, Hermitage, Jerome, Lake Village, McGehee, Monticello, Montrose, Parkdale, Portland, Reed, Rison, Star City, Tillar, Warren, Watson, Wilmar, Wilmot, Winchester

## **District 27—Trent Garner**

Bearden, Calion, Camden, East Camden, El Dorado, Felsenthal, Hampton, Harrell, Huttig, Junction City, Kingsland, Norphlet, Pine Bluff, Rison, Smackover, Strong, Thornton, Tinsman

## **District 28—Jonathan Dismang**

Allport, Almyra, Bald Knob, Beebe, Biscoe, Carlisle, Clarendon, Cotton Plant, Coy, De Valls Bluff, DeWitt, Des Arc, England, Garner, Georgetown, Griffithville, Hazen, Higginson, Holly Grove, Humnoke, Judsonia, Kensett, Keo, Lonoke, McRae, Roe, Saint Charles, Searcy, Stuttgart, Ulm, West Point

## **District 29—Ricky Hill**

Austin, Beebe, Cabot, Jacksonville, North Little Rock, Searcy, Sherwood, South Bend, Vilonia, Ward

## **District 30—Linda Chesterfield**

Jacksonville, Keo, Little Rock, Maumelle, North Little Rock, Sherwood, Wrightsville

## **District 31—Joyce Elliott**

Alexander, Little Rock, Shannon Hills

## **District 32—Will Bond**

Cammack Village, Little Rock, Maumelle, North Little Rock

## **District 33—Kim Hammer**

Alexander, Bauxite, Benton, Bryant, Little Rock, Shannon Hills

## **District 34—Jane English**

Jacksonville, Maumelle, North Little Rock, Sherwood

## **District 35—Jason Rapert**

Conway, Enola, Greenbrier, Holland, Mayflower, Vilonia

# 92<sup>ND</sup> GENERAL ASSEMBLY

## Senate Standing Committees—Class “A”

---

### Public Health, Welfare and Labor

Missy Irvin, Chair  
Dave Wallace, Vice Chair  
Bill Sample  
Ronald Caldwell  
Jimmy Hickey, Jr.  
Bart Hester  
Scott Flippo  
Kim Hammer

### Revenue and Taxation

Jonathan Dismang, Chair  
Larry Teague, Vice Chair  
Cecile Bledsoe  
Jason Rapert  
Bruce Maloch  
Keith Ingram  
Blake Johnson  
Trent Garner

### Education

Jane English, Chair  
Joyce Elliott, Vice Chair  
Linda Chesterfield  
Jim Hendren  
Eddie Cheatham  
Lance Eads  
Mark Johnson  
James Sturch

### Judiciary

Alan Clark, Chair  
Stephanie Flowers, Vice Chair  
Gary Stubblefield  
John Cooper  
Terry Rice  
Will Bond  
Bob Ballinger  
Greg Leding

# **Senate Standing Committees Class "B"**

---

## **Agriculture, Forestry and Economic Development**

John Cooper, Chair  
Ricky Hill, Vice Chair  
Bruce Maloch  
Eddie Cheatham  
Dave Wallace  
James Sturch  
Mathew Pitsch

## **Insurance and Commerce**

Jason Rapert, Chair  
Cecile Bledsoe, Vice Chair  
Linda Chesterfield  
Joyce Elliott  
Larry Teague  
Missy Irvin  
Jane English  
Mark Johnson

## **City, County and Local Affairs**

Gary Stubblefield, Chair  
Greg Leding, Vice Chair  
Stephanie Flowers  
Alan Clark  
Keith Ingram  
Jim Hendren  
Scott Flippo  
Terry Rice

## **State Agencies and Governmental Affairs**

Ronald Caldwell, Chair  
Trent Garner, Vice Chair  
Bill Sample  
Jimmy Hickey, Jr.  
Bart Hester  
Will Bond  
Breanne Davis  
Bob Ballinger

# **Senate Standing Committees Class "C"**

---

## **Transportation, Technology and Legislative Affairs**

Blake Johnson, Chair

Breanne Davis, Vice Chair

Jonathan Dismang

Lance Eads

Ricky Hill

Mathew Pitsch

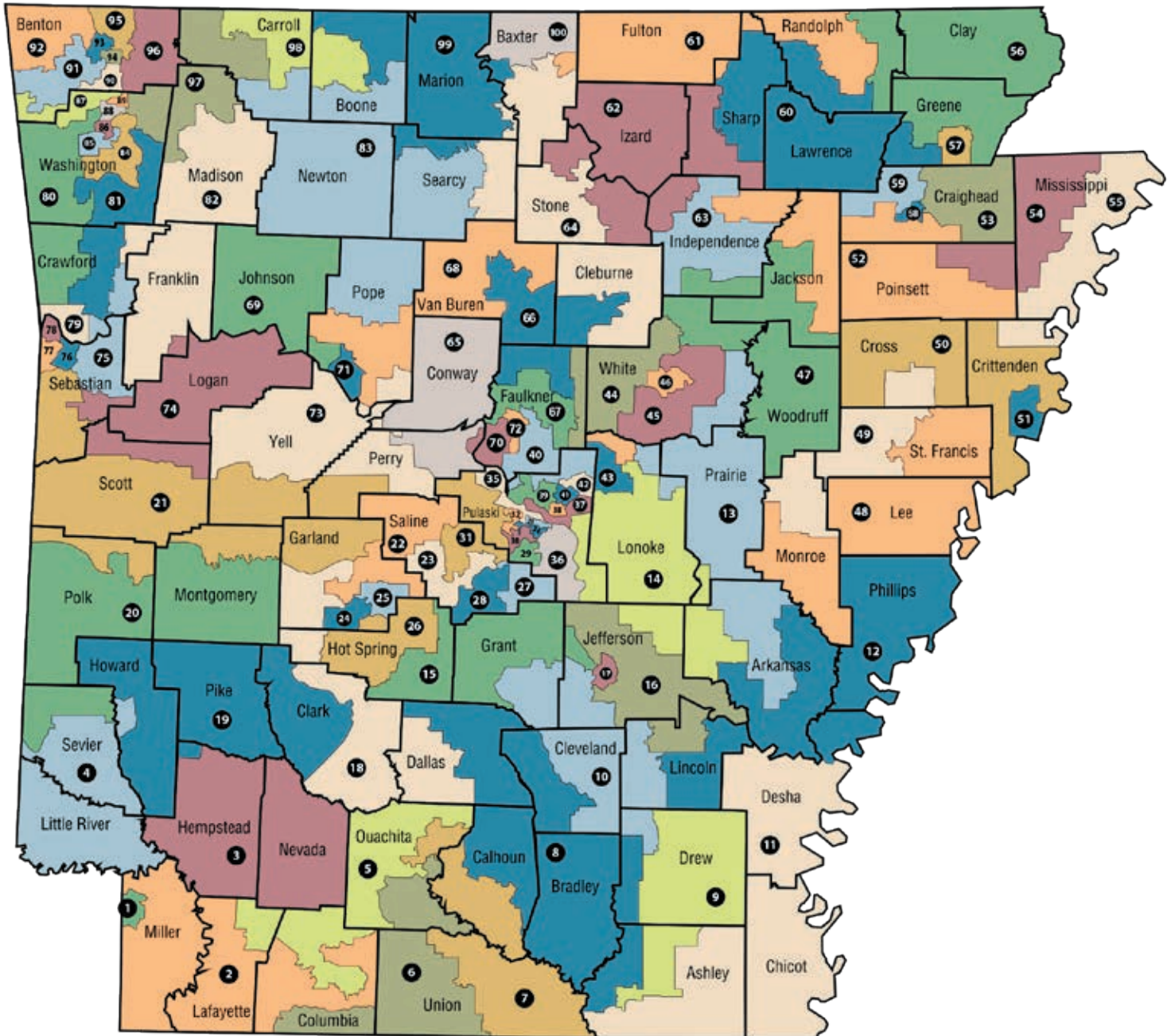
Kim Hammer



# State House Districts Map

State House Districts are identified by color-code and number.

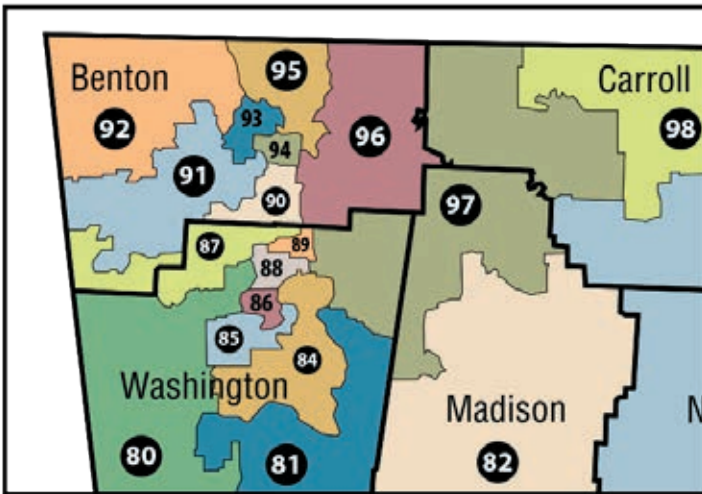
The official maps are available from the Arkansas Secretary of State's office or online at [www.sos.arkansas.gov](http://www.sos.arkansas.gov).





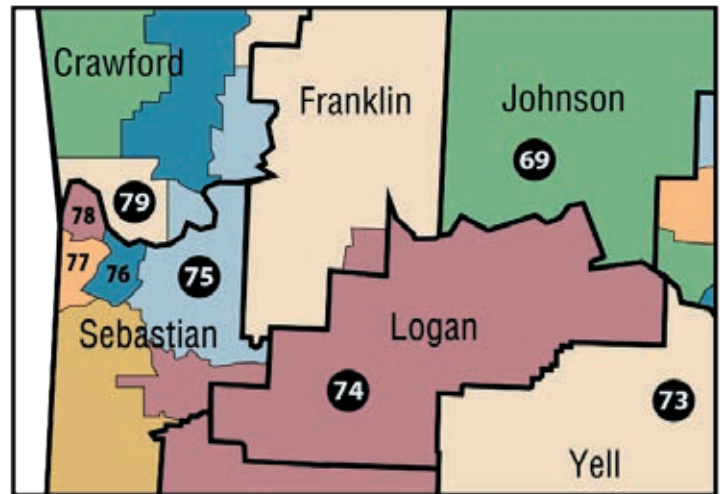
# State House Districts Detail Maps

NORTHWEST ARKANSAS DETAIL



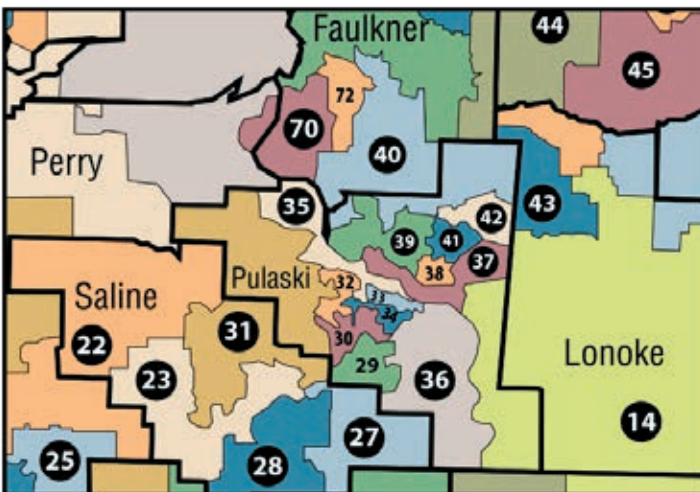
State House Districts are identified by color-code and number. The official maps are available from the Arkansas Secretary of State's office or online at [www.sos.arkansas.gov](http://www.sos.arkansas.gov).

FORT SMITH AREA DETAIL



**Close up views of the northwest, Fort Smith and central State House Districts.**

CENTRAL ARKANSAS DETAIL



# House Districts and Municipalities

---

## **District 1—Carol Dalby**

Texarkana

## **District 2—Lane Jean**

Bradley, Emerson, Fouke, Fulton, Garland, Lewisville, Magnolia, Taylor, Texarkana

## **District 3—Danny Watson**

Blevins, Bodcaw, Cale, Emmet, Fulton, Hope, McCaskill, McNab, Oakhaven, Ozan, Patmos, Perrytown, Prescott, Washington

## **District 4—DeAnn Vaught**

Ashdown, Ben Lomond, De Queen, Dierks, Foreman, Horatio, Lockesburg, Ogden, Wilton, Winthrop

## **District 5—David Fielding**

Bearden, Bluff City, Buckner, Camden, Chidester, Lewisville, Magnolia, McNeil, Rosston, Stamps, Stephens, Waldo, Willisville

## **District 6—Matthew J. Shepherd**

Camden, East Camden, El Dorado, Emerson, Junction City, Louann, Smackover

## **District 7—Sonia Eubanks Barker**

Bearden, Calion, Camden, East Camden, El Dorado, Felsenthal, Hampton, Huttig, Norphlet, Smackover, Strong

## **District 8—Jeff Wardlaw**

Banks, Carthage, Crossett, Fordyce, Hampton, Harrell, Hermitage, Kingsland, Thornton, Tinsman, Warren, Wilmar

## **District 9—LeAnne Burch**

Crossett, Fountain Hill, Hamburg, Jerome, Monticello, Tillar, Winchester

## **District 10—Mike Holcomb**

Monticello, Pine Bluff, Rison, Sheridan, Star City, White Hall

## **District 11—Don Glover**

Arkansas City, Crossett, Dermott, Dumas, Eudora, Lake Village, McGehee, Mitchellville, Montrose, Parkdale, Portland, Reed, Tillar, Watson, Wilmot, Winchester

## **District 12—Chris Richey**

Elaine, Gillett, Gould, Helena-West Helena, Lake View, Lexa, Marvell, Saint Charles, Star City

## **District 13—David Hillman**

Almyra, Biscoe, De Valls Bluff, DeWitt, Des Arc, Georgetown, Griffithville, Hazen, Stuttgart, Ulm

## **District 14—Roger D. Lynch**

Allport, Carlisle, Coy, England, Humnoke, Humphrey, Keo, Lonoke, North Little Rock, Stuttgart, Wabaseka

## **District 15—Ken Bragg**

Donaldson, Leola, Midway, Pine Bluff, Poyen, Prattville, Sheridan, Traskwood, Tull, White Hall

## **District 16—Kenneth B. Ferguson**

Altheimer, Grady, Pine Bluff, Redfield, Sherrill, White Hall

## **District 17—Vivian Flowers**

Pine Bluff, White Hall

## **District 18—Richard Womack**

Arkadelphia, Caddo Valley, Gum Springs, Gurdon, Mountain Pine, Sparkman, Whelen Springs

## **District 19—Justin Gonzales**

Amity, Antoine, Daisy, Delight, Glenwood, Mineral Springs, Murfreesboro, Nashville, Okolona, Tollette

## **District 20—John Maddox**

Black Springs, Cove, De Queen, Gillham, Glenwood, Grannis, Hatfield, Mena, Mount Ida, Norman, Oden, Vandervoort, Wickes

# House Districts and Municipalities

---

## **District 21—Marcus E. Richmond**

Bonanza, Fort Smith, Greenwood, Hackett, Hartford, Huntington, Mansfield, Mena, Midland, Waldron

## **District 22—Mickey Gates**

Fountain Lake, Hot Springs, Lonsdale, Mountain Pine

## **District 23—Lanny Fite**

Benton, Bryant, Fountain Lake, Haskell

## **District 24—Bruce Cozart**

Hot Springs

## **District 25—Les A. Warren**

Hot Springs

## **District 26—Laurie Rushing**

Friendship, Hot Springs, Malvern, Midway, Perla, Rockport

## **District 27—Julie Mayberry**

Alexander, Bauxite, Bryant, Little Rock, Shannon Hills

## **District 28—Jasen Kelly**

Alexander, Bauxite, Benton, Bryant, Haskell, Shannon Hills, Traskwood, Tull

## **District 29—Fredrick J. Love**

Alexander, Little Rock, Shannon Hills

## **District 30—Fred Allen**

Little Rock

## **District 31—Andy Davis**

Alexander, Benton, Bryant, Little Rock

## **District 32—James J. Sorvillo**

Little Rock

## **District 33—Tippi McCullough**

Little Rock

## **District 34—John W. Walker**

Little Rock

## **District 35—Andrew Collins**

Cammack Village, Little Rock, Maumelle, North Little Rock

## **District 36—Charles Blake**

Little Rock, North Little Rock, Wrightsville

## **District 37—Jamie Scott**

Jacksonville, Little Rock, Maumelle, North Little Rock, Sherwood

## **District 38—Carlton Wing**

North Little Rock, Sherwood

## **District 39—Mark Lowery**

Maumelle, North Little Rock, Sherwood

## **District 40—Douglas House**

Cabot, Conway, Jacksonville, Maumelle, Mayflower, Sherwood

## **District 41—Karilyn Brown**

Jacksonville, North Little Rock, Sherwood

## **District 42—Mark Perry**

Jacksonville, Sherwood

## **District 43—Brian S. Evans**

Austin, Cabot, Jacksonville

## **District 44—Cameron Cooper**

Austin, Cabot, Letona, Mount Vernon, Pangburn, Rose Bud, Vilonia, Ward

## **District 45—Jim Wooten**

Bald Knob, Beebe, Garner, Higginson, Judsonia, Kensett, McRae, Searcy, West Point

## **District 46—Les Eaves**

Kensett, Searcy

# House Districts and Municipalities

---

## **District 47—Craig Christiansen**

Augusta, Bradford, Campbell Station, Cotton Plant, Diaz, Hunter, Jacksonport, McCrory, Newport, Patterson, Pleasant Plains, Russell, Tupelo, Weldon

## **District 48—Reginald Murdock**

Aubrey, Clarendon, Forrest City, Haynes, Holly Grove, Hughes, Jennette, La Grange, Madison, Marianna, Moro, Roe, Rondo, Wheatley, Widener

## **District 49—Steve Hollowell**

Brinkley, Caldwell, Colt, Fargo, Forrest City, Madison, Palestine, Wheatley, Wynne

## **District 50—Milton Nicks, Jr.**

Anthonyville, Cherry Valley, Clarkedale, Crawfordsville, Earle, Edmondson, Gilmore, Hickory Ridge, Horseshoe Lake, Jennette, Jericho, Marion, Parkin, Sunset, West Memphis, Wynne

## **District 51—Deborah Ferguson**

Edmondson, Marion, Sunset, West Memphis

## **District 52—Dwight Tosh**

Alicia, Amagon, Bay, Beedeville, Cash, Fisher, Grubbs, Harrisburg, Jonesboro, Marked Tree, Swifton, Tuckerman, Tyronza, Waldenburg, Weiner

## **District 53—Dan Sullivan**

Bay, Black Oak, Brookland, Caraway, Jonesboro, Lake City, Monette

## **District 54—Johnny Rye**

Blytheville, Caraway, Dell, Dyess, Etowah, Gosnell, Keiser, Leachville, Lepanto, Manila, Osceola, Trumann

## **District 55—Monte Hodges**

Bassett, Birdsong, Blytheville, Burdette, Gilmore, Joiner, Keiser, Luxora, Marie, Osceola, Turrell, Victoria, Wilson

## **District 56—Joe Jett**

Biggers, Corning, Datto, Delaplaine, Greenway, Knobel, Lafe, Marmaduke, Maynard, McDougal, Nimmons, Oak Grove Heights, O’Kean, Paragould, Peach Orchard, Piggott, Pollard, Rector, Reyno, Saint Francis, Success

## **District 57—Jimmy Gazaway**

Oak Grove Heights, Paragould

## **District 58—Brandt Smith**

Jonesboro

## **District 59—Jack Ladyman**

Bono, Cash, Egypt, Jonesboro, Sedgwick

## **District 60—Frances Cavanaugh**

Alicia, Black Rock, Cherokee Village, Colledge City, Hardy, Highland, Hoxie, Imboden, Lynn, Minturn, Portia, Powhatan, Ravenden, Ravenden Springs, Sedgwick, Smithville, Strawberry, Walnut Ridge, Williford

## **District 61—Marsh Davis**

Ash Flat, Cherokee Village, Hardy, Highland, Horseshoe Bend, Mammoth Spring, Oxford, Pocahontas, Salem, Viola

## **District 62—Michelle Gray**

Ash Flat, Calico Rock, Cave City, Cushman, Evening Shade, Fifty-Six, Franklin, Guion, Highland, Horseshoe Bend, Melbourne, Mount Pleasant, Mountain View, Oxford, Pineville, Sidney

## **District 63—Stu Smith**

Batesville, Cave City, Magness, Moorefield, Newark, Oil Trough, Southside, Sulphur Rock

## **District 64—John Payton**

Big Flat, Briarcliff, Concord, Fairfield Bay, Greers Ferry, Higden, Leslie, Mountain View, Norfolk, Salesville

# House Districts and Municipalities

---

## **District 65—Rick Beck**

Adona, Bigelow, Conway, Fourche, Houston, Menifee, Morrilton, Oppelo, Perry, Perryville, Plumerville

## **District 66—Josh Miller**

Clinton, Damascus, Enola, Guy, Heber Springs, Quitman, Twin Groves

## **District 67—Stephen Meeks**

Conway, Enola, Greenbrier, Holland, Vilonia, Wooster

## **District 68—Stan Berry**

Atkins, Dover, Fairfield Bay, Pottsville, Russellville, Shirley

## **District 69—Aaron Pilkington**

Clarksville, Coal Hill, Hartman, Knoxville, Lamar, London

## **District 70—Spencer Hawks**

Bigelow, Conway, Fourche

## **District 71—Joe Cloud**

Pottsville, Russellville

## **District 72—Stephen Magie**

Conway, Mayflower

## **District 73—Mary Bentley**

Adona, Atkins, Belleville, Casa, Danville, Dardanelle, Havana, Ola, Plainview

## **District 74—Jon S. Eubanks**

Blue Mountain, Booneville, Caulksville, Greenwood, Magazine, Mansfield, Morrison Bluff, Paris, Ratcliff, Scranton, Subiaco

## **District 75—Lee Johnson**

Alma, Barling, Central City, Charleston, Dyer, Fort Smith, Greenwood, Kibler, Lavaca, Mulberry

## **District 76—Cindy Crawford**

Barling, Fort Smith, Van Buren

## **District 77—Justin Boyd**

Fort Smith

## **District 78—Jay Richardson**

Fort Smith, Van Buren

## **District 79—Gary Deffenbaugh**

Barling, Fort Smith, Van Buren

## **District 80—Charlene Fite**

Cedarville, Fayetteville, Johnson, Lincoln, Morrow, Prairie Grove, Salem Springs, Springdale, Tontitown

## **District 81—Bruce Coleman**

Alma, Chester, Elkins, Fayetteville, Goshen, Mountainburg, Rudy, Sulphur Springs, West Fork, Winslow

## **District 82—Sarah Capp**

Altus, Branch, Charleston, Denning, Huntsville, Mulberry, Ozark, Saint Paul, Wiederkehr Village

## **District 83—Keith Slape**

Alpena, Bellefonte, Everton, Gilbert, Harrison, Hector, Jasper, Marshall, Saint Joe, Valley Springs, Western Grove, Zinc

## **District 84—Denise Garner**

Elkins, Farmington, Fayetteville, Greenland, Johnson, Prairie Grove, Springdale, Sulphur Springs, West Fork

## **District 85—David Whitaker**

Farmington, Fayetteville, Prairie Grove

## **District 86—Nicole Clowney**

Fayetteville, Johnson

# House Districts and Municipalities

---

## **District 87—Robin Lundstrum**

Elm Springs, Siloam Springs, Springdale, Tontitown

## **District 88—Clint Penzo**

Fayetteville, Johnson, Springdale, Tontitown

## **District 89—Megan Godfrey**

Bethel Heights, Springdale

## **District 90—Jana Della Rosa**

Bethel Heights, Cave Springs, Elm Springs, Highfill, Lowell, Rogers, Springdale

## **District 91—Dan M. Douglas**

Bentonville, Cave Springs, Centerton, Gentry, Highfill, Rogers, Siloam Springs, Springdale, Springtown

## **District 92—Gayla H. McKenzie**

Bella Vista, Bentonville, Centerton, Decatur, Gravette, Sulphur Springs

## **District 93—Jim Dotson**

Bentonville, Cave Springs, Centerton, Little Flock, Rogers

## **District 94—Rebecca Petty**

Bentonville, Rogers

## **District 95—Austin McCollum**

Avoca, Bella Vista, Bentonville, Little Flock, Pea Ridge, Rogers

## **District 96—Grant Hodges**

Avoca, Bethel Heights, Garfield, Gateway, Lowell, Rogers, Springdale

## **District 97—Harlan Breaux**

Beaver, Berryville, Eureka Springs, Goshen, Hindsville, Springdale

## **District 98—Ron McNair**

Alpena, Berryville, Blue Eye, Green Forest, Harrison, Oak Grove

## **District 99—Jack Fortner**

Bergman, Bull Shoals, Cotter, Diamond City, Flippin, Gassville, Gilbert, Lead Hill, Omaha, Pindall, Pyatt, Saint Joe, South Lead Hill, Summit, Western Grove, Yellville

## **District 100—Nelda Speaks**

Bull Shoals, Lakeview, Mountain Home

# **92<sup>nd</sup> GENERAL ASSEMBLY**

## **House Standing Committees Class "A"**

---

**Education**

**Judiciary**

**Public Health, Welfare and Labor**

**Public Transportation**

**Revenue and Taxation**

## **House Standing Committees Class "B"**

---

**Aging, Children and Youth, Legislative and Military Affairs**

**Agriculture, Forestry and Economic Development**

**City, County and Local Affairs**

**Insurance and Commerce**

**State Agencies and Governmental Affairs**

House Chairs, Vice Chairs and House Committee members are not listed in the printing of this material, as printing occurred prior to the convening of the 92nd General Assembly.



92nd



[www.arml.org](http://www.arml.org)

